

# EXP360A

## SEMI-AUTOMATIC POWDER ACTUATED .27 CALIBER STRIP TOOL POWER ADJUSTABLE

Fastener Length: 2-1/2" Maximum

## OPERATORS MANUAL



### WARNING

Read this manual carefully before operating this tool. Successful fastening applications require knowledge of tool use restrictions, load and fastener selection, tool operation, and disassembly and reassembly for daily cleaning.

Never operate this tool in a flammable atmosphere.

This powder actuated tool is to be used only by operators who are qualified and licensed for this particular tool.

# OPERATING PRECAUTIONS

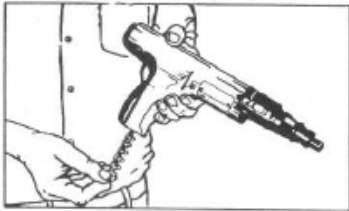
1. Safety first, never point the tool at anyone.
2. Never cock the tool against hands.
3. Always unload tool prior to any dis-assembly, cleaning, work breaks or storage.
4. Never leave the tool unattended, store under lock & key.
5. Never load the tool until you are ready to use it.
6. Always insert fastener before cocking the tool.
7. If a cartridge fails to fire, hold the tool firmly against the work surface for thirty (30) seconds. If the tool still fails to fire, release the trigger and let the tool back some from the work surface. Reposition the tool against the work surface, depress it and pull the trigger again. If the load still does not fire, wait another thirty (30) seconds, remove the tool from the work surface carefully while keeping it pointed in a safe direction. Remove the strip from the tool and carefully dispose of it in a container of water. Do not attempt to use other loads in a magazine with a defective load & never attempt to pry a load from a magazine. Never leave unfired magazines on the floor or work surface. Always dispose of them properly.
8. Always inspect the tool prior to use to make sure that the tool is in good working order, has no fractured or broken parts, and that there are no obstructions in the barrel or load chamber.
9. If the tool does not work properly or is in need of repair, remove it from service immediately, tag it as NEEDS REPAIR and contact a distributor for repair.
10. Never modify any powder actuated tool.
11. Do not mix load colors and types.
12. Clean and inspect the tool daily or more often if necessary.
13. Always wear safety goggles and a hard hat when using a powder actuated tool. Use ear protection in confined areas.
14. Always store the tool in a secure and locked area when not in use.

**REMEMBER SAFETY IS IN YOUR HANDS.**

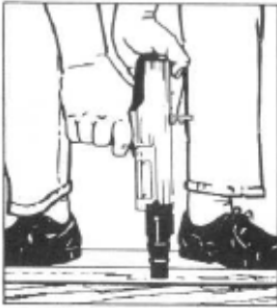
# OPERATING INSTRUCTIONS



1. Insert the fastener, point out, into the guide until it is held securely by the flute. Retract barrel to the position shown in drawing #2.



2. Insert the magazine into the bottom of the handle until flush with the bottom. Always insert from the bottom of the tool & remove from the top only.



3. Press the tool firmly & squarely against the work surface. Depress the tool completely & pull the trigger. Hold tool perpendicular to workpiece for best fastening & use the rubber stabilizer.



4. In one brisk motion pull out baseplate & piston sleeve to their fully extended length. Then repeat steps 1, 2 & 3 until all of the loads in the magazine are used.



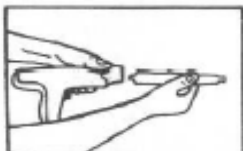
5. The fastener driving power may be adjusted by turning the regulating wheel :

1=min.power    3=max.power

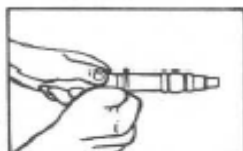
## DISASSEMBLY



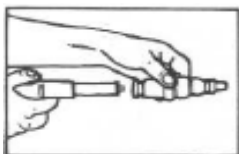
1. Lift the end of the annular spring and rotate toward the top of the tool. Pull the stop back and outward to remove.



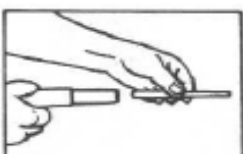
2. Slide out the complete operating assembly.



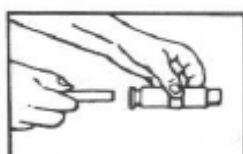
3. Remove the shear clip using the point of a fastener.



4. Separate the baseplate and guide from the sleeve.



5. Remove piston from piston sleeve.

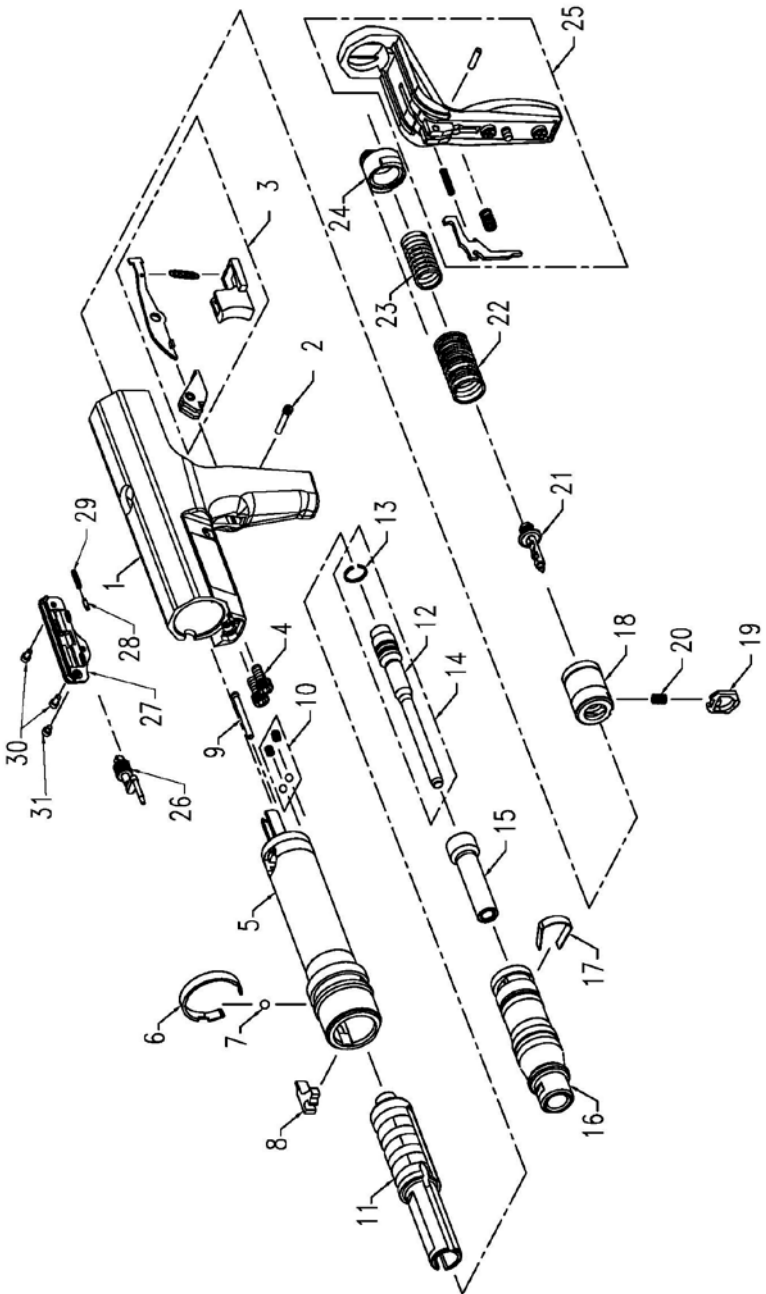


6. Remove guide from baseplate.

## REASSEMBLY

1. Push the piston into the piston sleeve, in reverse order of drawing #5 above.
2. Insert the guide into the baseplate, in reverse order of drawing #6 above.
3. Put the piston sleeve portion & the baseplate portion together. Make sure that the stop slot on both portions is aligned.
4. Snap the shear clip into place. This holds the front assembly together.
5. Insert the front assembly into the liner in the tool body. Make sure that the stop slot in the front assembly is aligned with the stop slot in the tool body.
6. Restore the stop & rotate the annular spring to hold it in place, in reverse order of drawing #1 above.

# PARTS SCHEMATIC & LIST



ITEM NO.	PART NO.	DESCRIPTION
1	385001	TOOL BODY
2	301034	TRIGGER PIN
3	301500	TRIGGER HOLDER ASSEMBLY
4	301015	BOLT
5	355100	LINER
6	301014	ANNULAR SPRING
7	301013	BALL, ANNULAR SPRING
8	301012	STOP
9	301016	PUSH PIN
10	301048	DETENT BALL ASSEMBLY
11	355006	PISTON SLEEVE
12	355207	PISTON
12-A	355206	PISTON (CONCAVE)
13	301208	PISTON RING
14	355903	PISTON ASSEMBLY
14-A	355904	PISTON ASSEMBLY (CONCAVE)
15	301010	GUIDE
16	301009	BASEPLATE
17	301011	SHEAR CLIP
18	301300	SEAR HOLDER
19	301023	SEAR
20	301024	SPRING, SEAR
21	301904	FIRING PIN ASSEMBLY
22	301026	SPRING, SEAR HOLDER
23	301025	SPRING, FIRING PIN
24	301028	PLUG
25	301600	RUBBER PAD ASSEMBLY
26	355610	ADJUST PIN and WHEEL ASSEMBLY
27	355601	PANEL
28	355602	PIN, PANEL
29	355603	SPRING, PANEL

## CLEANING

After the front end of tool is completely disassembled, clean all parts with the brushes provided. Spray all parts with lubricant. Let it sit for a moment and then wipe dry before reassembly. CAUTION: DO NOT USE ANY KIND OF LUBRICANT ON THE MAIN HOUSING OF THE TOOL. DRY BRUSH ONLY. This is the perfect time to inspect your tool for damage or excessive wear. If defective or excessively worn parts are found, replace them immediately or remove the tool from service until they can be replaced.

# APPLICATION RESTRICTIONS

1. Always make test fastenings with the lowest power load or power level & increase as proper penetration requires, overdriving results from too strong a load or power level, too short a fastener, or a work surface that is too soft.
2. Never use a tool in an explosive or flammable area.
3. Fasteners should not be driven into spalled areas.
4. Never attempt to fasten into very hard or brittle materials; surface-hardened or high tensile strength steel, glazed tile, cast iron, glass block, natural rock, face brick or hollow tile.
5. Never fasten through a predrilled hole.
6. Never fasten into concrete closer than 3 inches from an unsupported edge unless the specific application is approved.
7. Fasteners shall not be driven into concrete where the thickness is less than 3 times the penetration of the fastener shank.
8. Fasteners shall not be driven closer than 1/2" from the edge of steel & never into steel less than 1/8" thick.

---

---

## FASTENER PENETRATION GUIDE

SOFT MASONRY	Cinder or Concrete block, etc.	1" to 1-1/4" penetration
AVG. CONCRETE	Poured Concrete, etc.	3/4" to 1" penetration
DENSE CONCRETE	Pre Stressed/pre-cast concrete	5/8" to 3/4" penetration
STEEL	Structural steel, etc.	3/16" to 1/2" penetration

## LOAD SELECTION GUIDE

### .27 cal loads in 10 load magazines

Description / Color	Power Level
#3 / GREEN	LIGHT
#4 / YELLOW	MEDIUM
#5 / RED	HEAVY

# TROUBLE SHOOTING CHART

<b>PROBLEM</b>	<b>POSSIBLE CAUSE</b>	<b>REMEDY</b>
TOOL FAILS TO FIRE	BAD POWER LOAD	CHANGE TO A NEW LOAD STRIP
POWDER MAGAZINE FAILS TO ADVANCE PROPERLY	DIRTY OR DAMAGED ADVANCE MECHANISM  WORN OR MISSHAPED POWDER MAGAZINE	DRY CLEAN WITH BRUSH &/OR AIR. DO NOT LUBRICATE. IF THERE IS STILL A PROBLEM. CONTACT YOUR DISTRIBUTOR.  REMOVE MAGAZINE FROM TOP OF TOOL & INSERT A NEW MAGAZINE
REDUCTION OR LOSS OF POWER	WORN PISTON RING	REMOVE PISTON AND REPLACE PISTON RING--CLEAN TOOL AT THIS TIME
PISTON HANGS OUT END OF THE TOOL	BROKEN PISTON	REPLACE PISTON--CLEAN TOOL AT THIS TIME
MOVEMENT OF BARREL IS ROUGH OR BINDS	LACK OF PROPER CLEANING	CLEAN TOOL ACCORDING TO INSTRUCTIONS IN THE MANUAL. REPLACE DAMAGED PARTS.
TOOL DOES NOT DEPRESS COMPLETELY	TOOL NOT PROPERLY ASSEMBLED	DISASSEMBLE TOOL BARREL ASSEMBLY AND REASSEMBLE, MAKING SURE THAT PARTS ARE ALIGNED PROPERLY. IF TOOL STILL FAILS TO OPERATE PROPERLY, CALL YOUR DISTRIBUTOR.

AS WITH ANY FINE TOOL, PROPER MAINTENANCE IS ABSOLUTELY NECESSARY FOR THE TOOL TO OPERATE SAFELY AND EFFICIENTLY. DAILY CLEANING IS ADVISED. IN EXTREME USE CASES IT MAY BE NECESSARY TO CLEAN THE TOOL MORE OFTEN.